



GENDER IN EDUCATION

VVOB GUEST LECTURE

Dr. Wendelien Vantieghem

GENDER IN EDUCATION

IS THERE A PROBLEM?



EXAMINING FLANDERS



FLEMISH EDUCATION:

GENDER

	Boys	Girls
Repeating a year	43%	29%

Similar European trends

General education in third year	41%	31%
Special ed on age 11	9%	6%
Starts in higher education	55%	67%

EDUCATION

GENDER

- Girls outperforming boys in education:
 - Spatial dimension
 - 33 million girls fewer present in primary education than boys



EDUCATION

GENDER

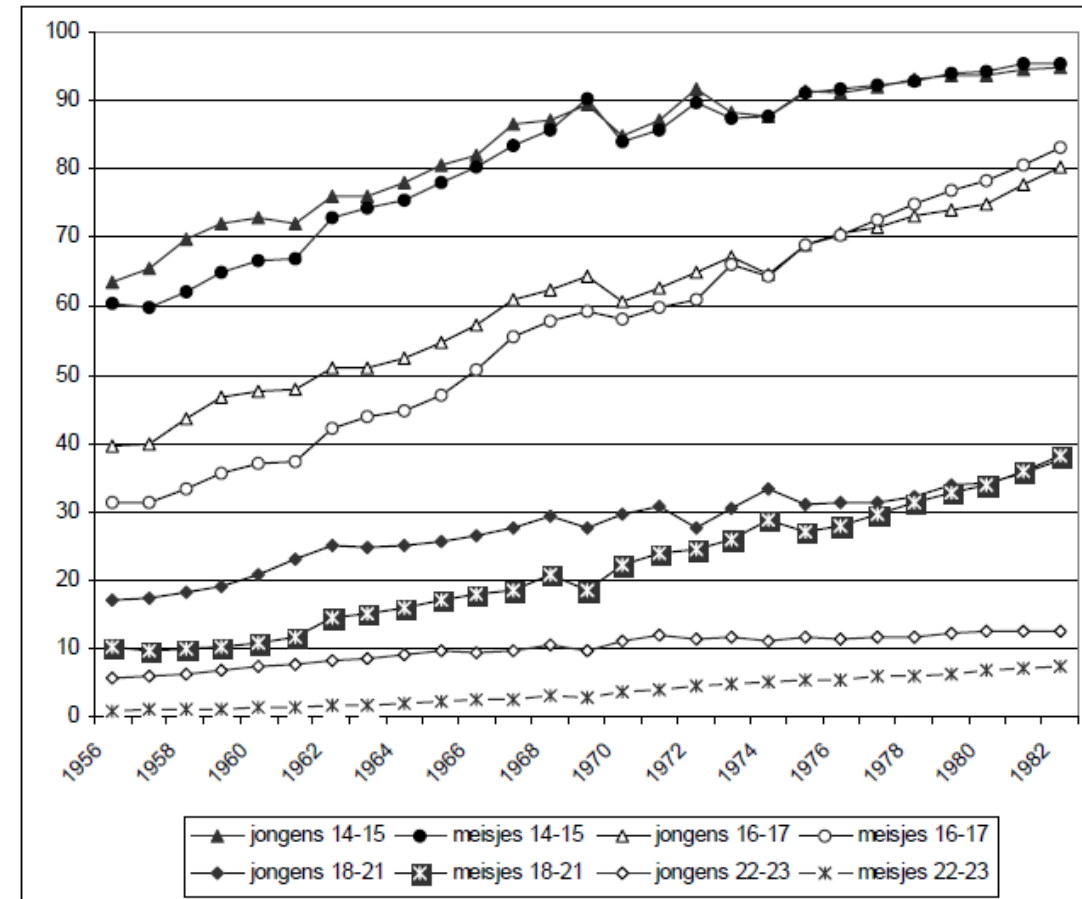
- Girls outperforming boys in education:

- Spatial dimension
- Recent phenomenon
 - 14- to 15-year girls equally represented: 1969
 - 16- to 17-year-old: 1974
 - Higher education: 1980



- Attention moved from participation to GPA, school behavior, study attitudes, ...

FIGUUR 12: EVOLUTIE VAN DE SCOLARISATIEGRAAD IN BELGIË, PER LEEFTIJDGROEP EN GESLACHT (1956-1983)



GENDER

INDIVIDUAL LEVEL: CAUSES

Boys' school behavior:

- More negative school attitudes
- Less motivated to study
- More inattentive
- More often disruptive in class
- Less disciplined with regards to school work
- Attribute succes to talent
← not hard work

GENDER

INDIVIDUAL LEVEL: CAUSES

OK...

But why do boys behave this way?

And why only in secondary education?

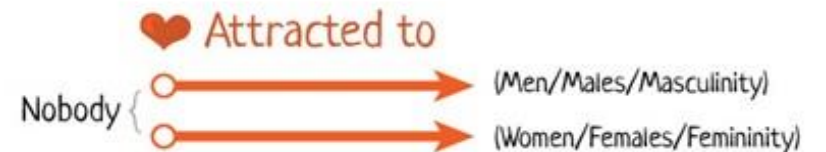
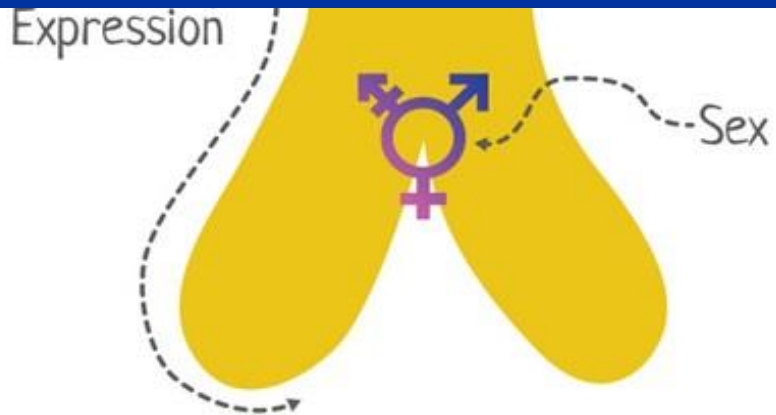
THE GENDERBREAD

GENDER > SEX

The Genderbread Person



Adolescence = exploration period



GENDER

INDIVIDUAL LEVEL: CAUSES



Masculine	Feminine
Strong	Weak
Competitive	Cooperative
Agressive	Compliant
Tough	Sensitive
Athletic	Academic
Logical	Creative
Dynamic	Quiet
Dominant	passive



anti-academic

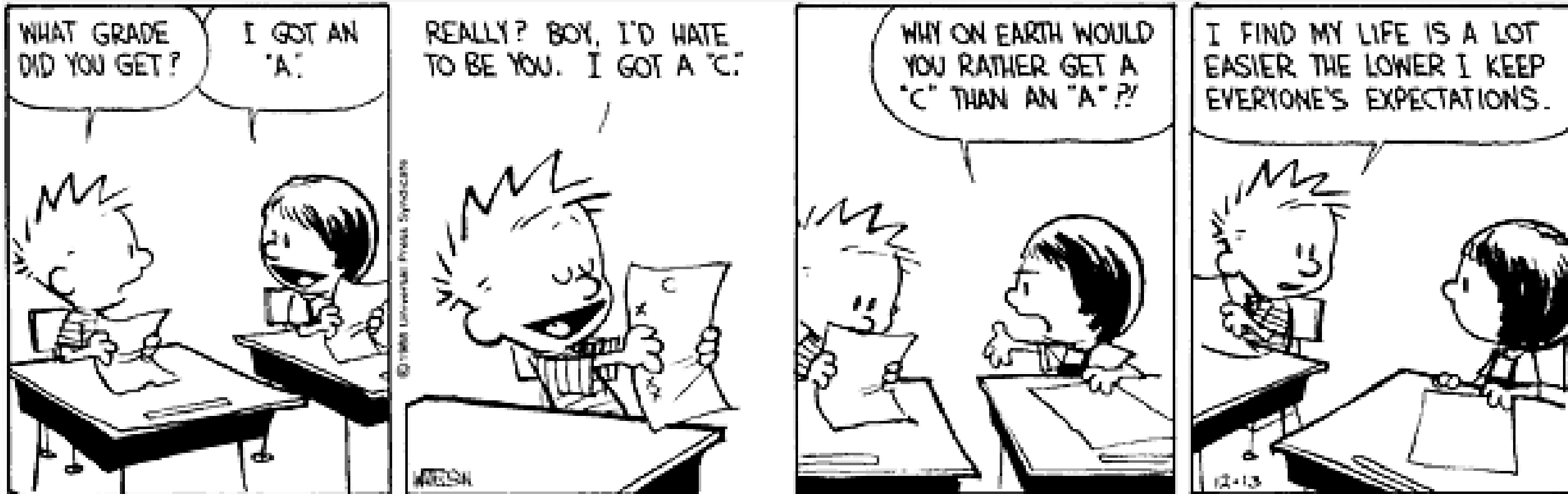


pro-school

GENDER

PEER LEVEL

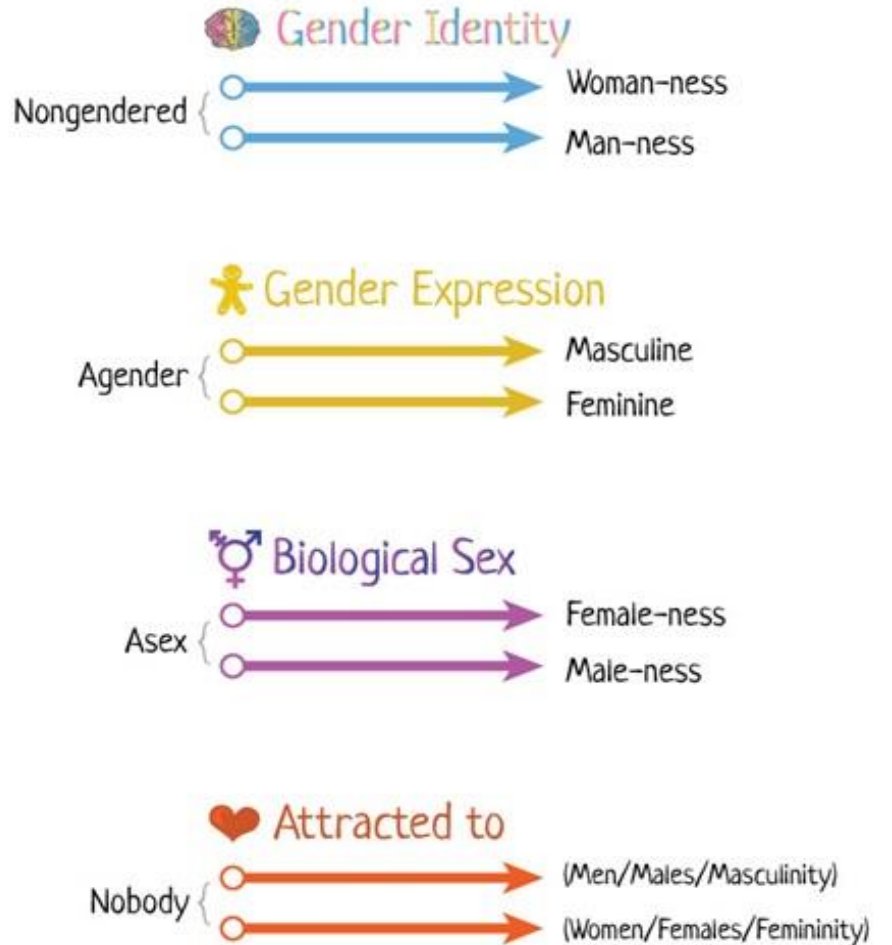
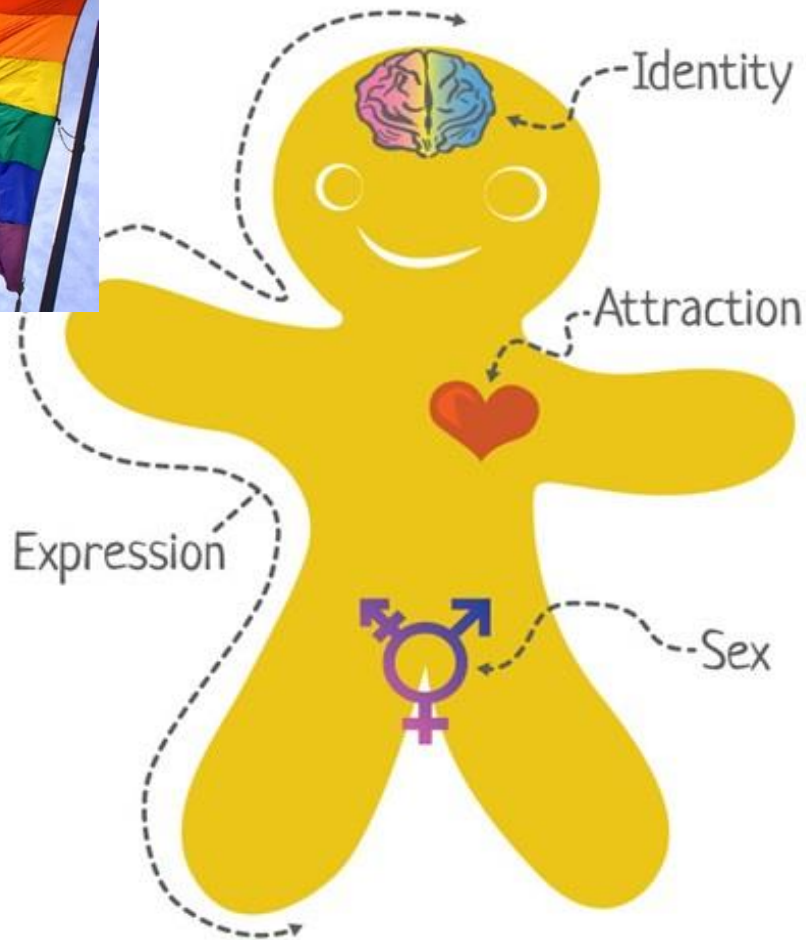
Peer culture



THE GENDERBREAD

GENDER > SEX

The Genderbread Person



LGBT STUDENTS

TEACHER LEVEL

- Teacher attitudes
 - Most positive about LGBT-students & gender
 - In comparison to ethnicity, SES, disability

LGBT STUDENTS

TEACHER LEVEL

- Discrepancy between attitudes & practice
 - ▣ ignoring the topic
 - ▣ 85% of students says to have been not or wrongly informed about LGB-sexuality at school
 - ▣ low competence for gender topics:
 - Questions about trans-students for 30 tot 50%
 - Handling sexism or working in gendersensitive way difficult for 25 to 50%
 - Especially in primary education!

GENDER

TEACHER LEVEL

Teacher bias:

- Higher expectations of girls
- Boys are seen as less “school ready”
- Boys are reprimanded more often

Male versus female teachers:

- No effect!

LGBT STUDENTS

SCHOOL LEVEL

- School cultures on gender

- ▶ Difference between educational level:
 - 30% primary schools thinks working on LGBT-friendly climate is “not applicable”
 - Secondary schools: <2% “not applicable”

LGBT STUDENTS

SYSTEM LEVEL

- School cultures on gender :
 - ▶ in progressive schools, everybody has higher well-being!
 - Boys & girls
 - Gay & straight
 - Students that do or do not uphold gender norms

GENDER & LGBT

SYSTEM LEVEL

- School policy:
 - Rules & regulations
 - Infrastructure
 - Anti-bullying policies
- Curriculum
 - Illustrations
 - Content
- Class practice
 - Awareness
 - Gender mixing



THANKS FOR
YOUR ATTENTION